

Technical Data Sheet

PIR CN ROOF PANELS

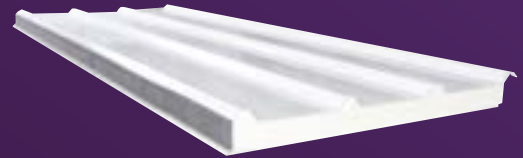
Updated: 30.05.2024



PRODUCT DESCRIPTION

Crazy Panels PIR Insulated Roof Panels provide the ideal solution for your roofing needs. Embrace the future of construction with Crazy Panels

Core:	PIR (Polyisocyanurate) 45kg/m ³
Width (cover mm):	1100mm
Thickness (mm):	50, 75.
Length:	Up to 6.0m
External Material:	0.5mm Al-Zn Coated Steel
External Colour:	Surf mist



NOTES:

This span table labelled Internal Cold Storage applies for cold storage constructed wholly within a larger enclosed building.

Check 'R' value for insulation requirements.

Self-weight of the panel has been allowed for, plus an allowance of up to 10kg/m² for light duty fittings (lights, etc.). No other dead loads permitted.

Non-trafficable maintenance access (concentrated load) of 140kg on any one panel has been allowed for.

Ceiling panels fixed with minimum 14g tek screws (x4 off) or mushroom head bolts (x2 off) per fixing point are required.

PIR Wall Panel Properties

Thickness (mm)	50	75
Mass (kg/m ²)	9.8	13.25
R-value m ² K/W @ 23°C	2.5	4.4
Thermal Conductivity	0.020 W/mK	0.020 W/mK
Pressure Strength	10 N/m ²	10 N/m ²

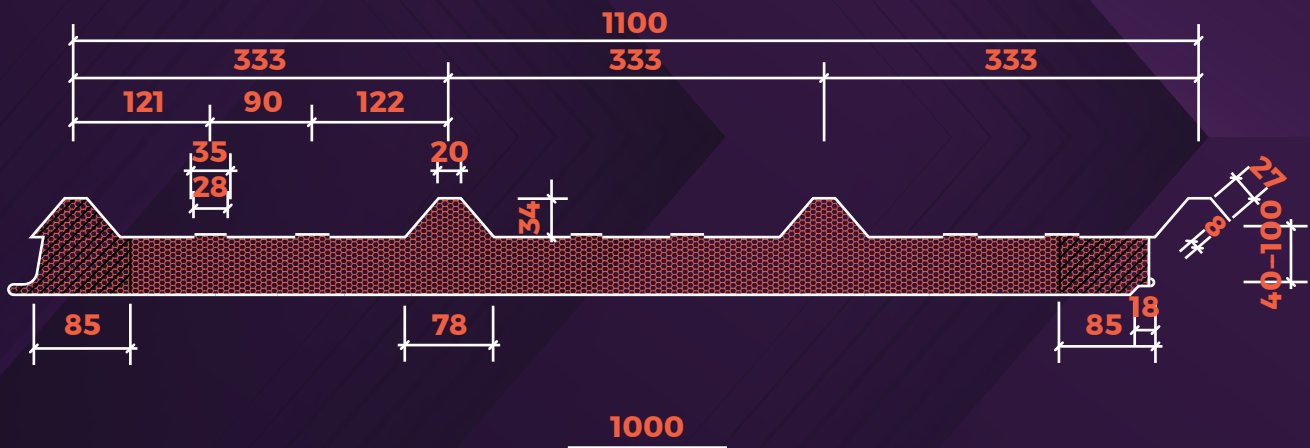
(1 & 2 Span) Internal Cold Storage - Maximum Span (mm)

Thickness (mm)	50	75
Ceilings (using roof panels)	3680	4212

(3 or more Span) Internal Cold Storage - Maximum Span (mm)

Thickness (mm)	50	100
Ceilings (using roof panels)	4578	5127

Roof Panel Profile



☎ 1300 543 336
✉ admin@crazypanels.com.au

www.crazypanels.com.au

97 SHEFFIELD ROAD, WELSHPOOL, WA, 6106.

PIR Roof panel Spanning table

Panel thickness	K Value (K/m ² · h · °C)	Panel weight	Spanning table												
			Single span (mm)						Double span (mm)						
			P=kg/m ²	60	80	100	120	150	200	60	80	100	120	150	200
50	0.32	12.05	L=	4606	4070	3680	3378	3027	2602	5158	4558	4212	3783	3390	3914
75	0.21	13.05	L=	5767	5078	4578	4190	3738	3192	6459	5687	5127	4692	4186	3575
100	0.16	14.05	L=	6818	5993	5393	4927	4385	3731	7636	6712	6040	5518	4911	4178

- Outer sheet: 0.5mm steel, Inner sheet: 0.5mm steel
- Panel type: Type1100

PIR Technical index

Test Item	Unit	Measured value	Standard value	Test standard
Density/Normal temp	Kg / m ³	≥ 42.9	≥ 30	ASTM, D1622, GB6343, GB/T6343-95 JC/T868-2000
Thermal conductivity	W / m · K	≤ 0.020	≤ 0.027W/m · K	ASTM C518, GB10294
Vapor transmission	Ng / P · m · s	≤ 3.34		GB10294-88 GB/T17146
Water absorption	g / 100 cm ²	≤ 0.5	≤ 4	GB/Z228, GB8810-88
Closed cell rate	%	≥ 97	≥ 90	GB10799
Compressive Strength	kPa	≥ 220	≥ 150	GB8813
Bending strengths	KN	≥ 2450	≥ 1750	GB/T8812
Continuous temp	C			GB8624
Fireproof rate		B1		ASTM E84
Maximum flame spread rate		> 15	> 25	
Vertical burning	(Average Burning Time)	≤ 7.96	≤ 30	GB8333
	(Average Burning height)	≤ 15	≤ 250	
Dimension stability		≤ 1%	ΔV ≤ 4%	ASTM

FM Global 4881 Certificate

